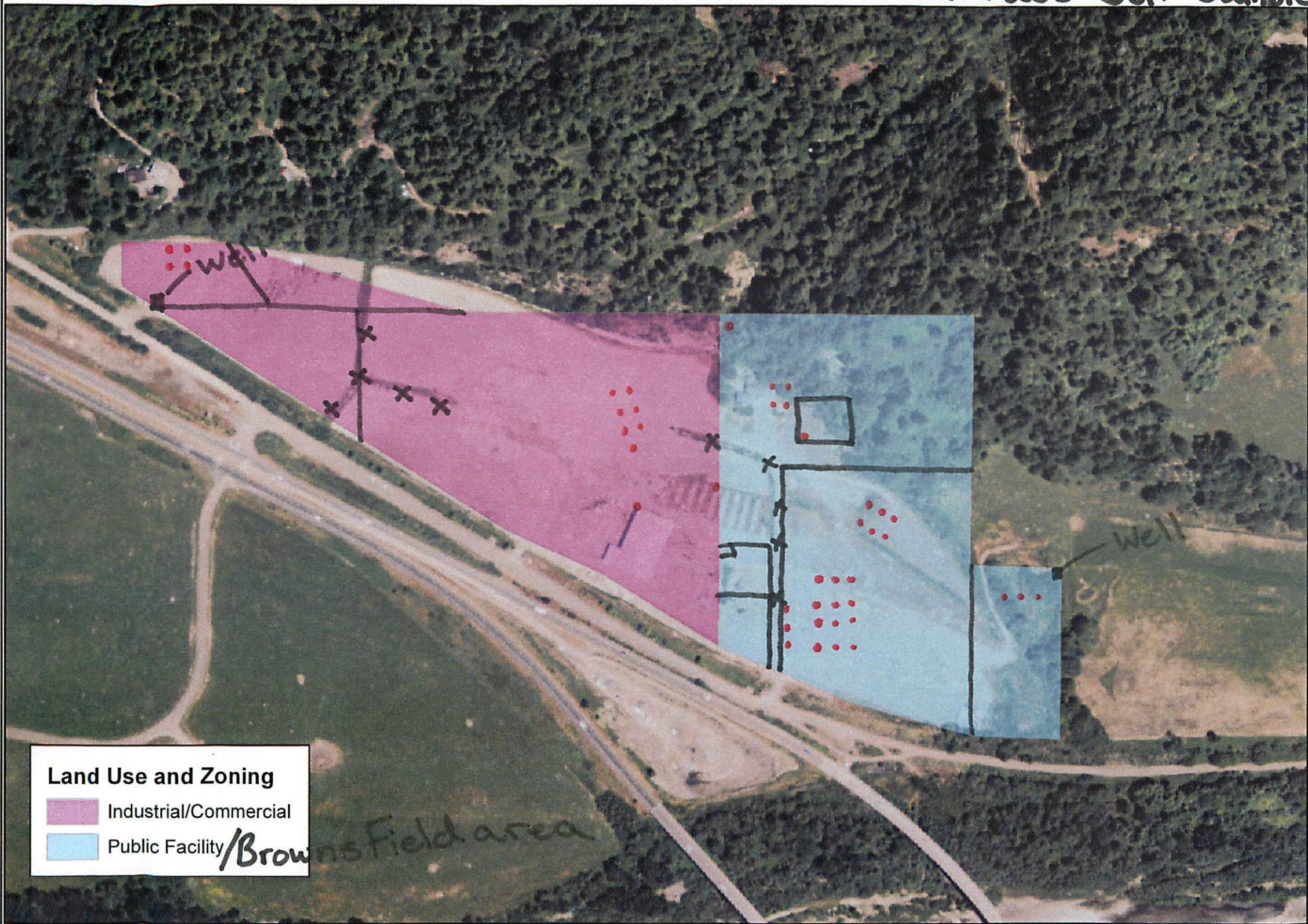


•-Test of soil core Land Use Designations x-Surface Soil Samples



Land Use and Zoning

-  Industrial/Commercial
-  Public Facility/Browns Field area



ALLOWABLE USES

INDUSTRIAL COMMERCIAL

Automotive sales, repair, maintenance & fueling
Carpentry & cabinet making stores
Gas stations
Governmental services
Health services (doctor or dental offices)
Large scale retail
Limited childcare facilities affiliated with a business
Limited lodging facilities affiliated with a business
Lumber yards
Manufacturing (wood products, clothing, handicraft)
Metal working shops
Painters & decorators yards
Plumbing shops
Power generation
Printing & lithographing
Professional services (consulting or bookkeeping offices)
Public Facility needs (water or police substations)
Residential uses - second floors only
Super markets
Telecommunications facilities & manufacturing
Wholesale outlet stores

PUBLIC FACILITY

Civic & Cultural uses (conference centers, museums, libraries)
Gift shop, restaurants & offices that are part of civic or cultural use
Parks
Public recreational uses (sports fields)
Residential uses restricted to caretaker apartment
Water & wastewater treatment facilities